



## Welcome to HARLOW ON MAIN!

There is a world outside that is waiting for you. We are excited to introduce Columbus' newest apartment community at an affordable price. Harlow is for the socially connected, free-spirited, and design-conscious person who thrives in an urban environment, and it's ideal for those who want to live with a smaller footprint. With eclectic shops, restaurants, and short proximity to Columbus Commons, Harlow is the premier location.

Harlow offers 4,500 sq. ft. of retail space with a skyline sun-deck that provides impressive views of downtown Columbus. When you live at Harlow, you can enjoy all the excitement of this urban locale. You can entertain your friends at Harlow Lounge, the perfect atmosphere exclusive to residents. Schedule a tour today and check out your new apartment!

**Big Location.** Small Price.

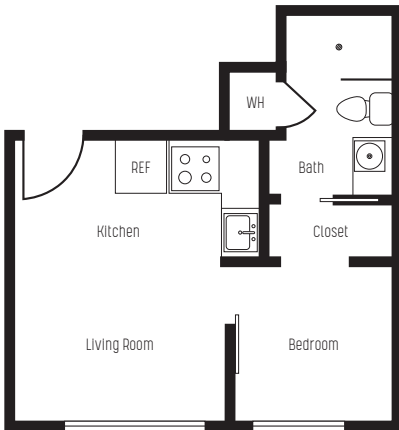
## Our AMENITIES

Your location is your biggest amenity. Most errands can be done on foot. Harlow is a short distance from Columbus Commons and yards away from Columbus staples like The Walrus and Little Palace. Secure building access, bike storage, community-wide Wi-Fi, and a Starbucks coffee bar are just a few of the additional amenities Harlow offers.

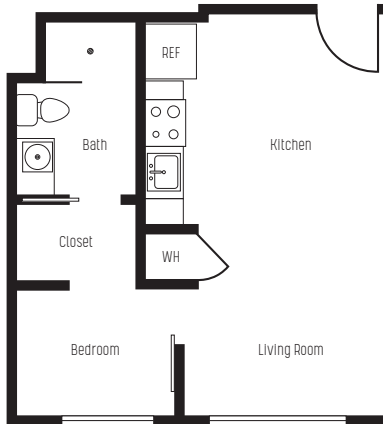
**Walkability Score: 90**



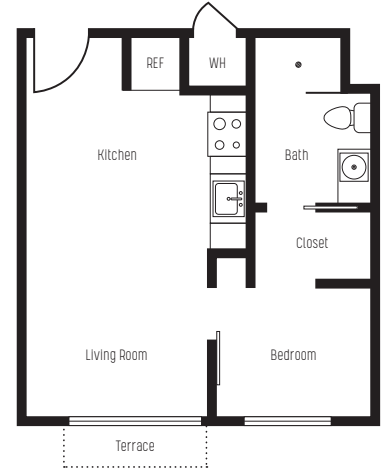
# Floor Plans



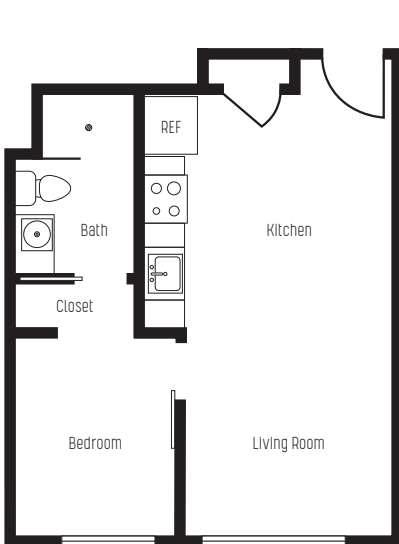
**THE HUDSON | 405 SQ FT**  
STUDIO



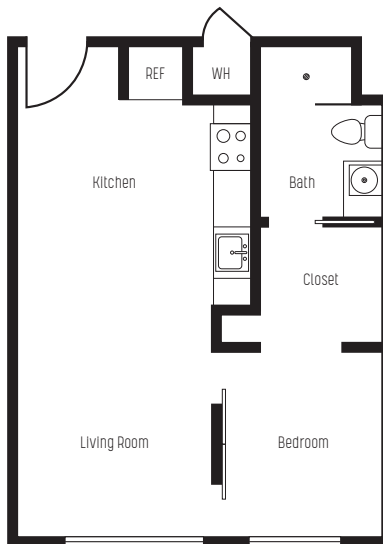
**THE LENNON | 453 SQ FT**  
1 BEDROOM | 1 BATH



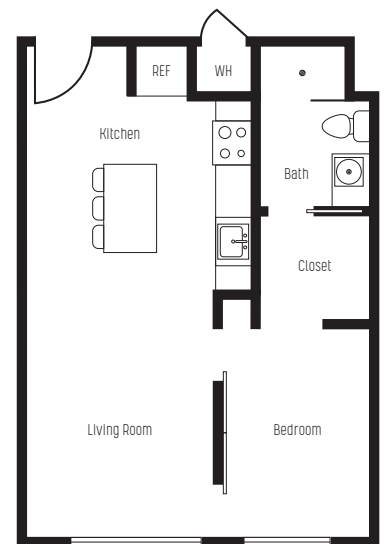
**THE STELLA\* | 450 SQ FT**  
1 BEDROOM | 1 BATH



**THE JUNIPER | 515 SQ FT**  
1 BEDROOM | 1 BATH



**THE MOXY | 552 SQ FT**  
1 BEDROOM | 1 BATH



**THE WATSON | 590 SQ FT**  
1 BEDROOM | 1 BATH

\*Actual Floor Plans May Vary | \*Terraces Available Only In Select Stella Units